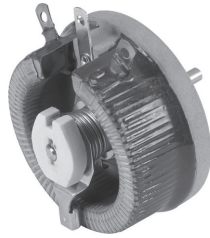


## Wirewound Rheostat/Potentiometer

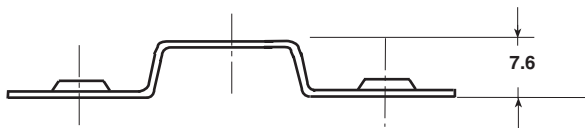


### FEATURES

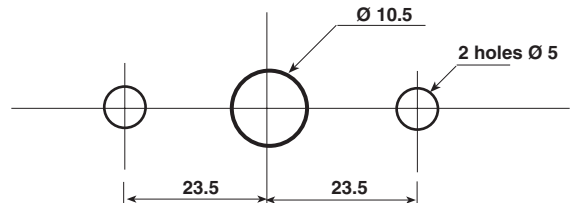
- 55 Watt at 25°C
- 40 Watt at 25°C
- CCTU 05-03B (PA3)

### DIMENSIONS in millimeters

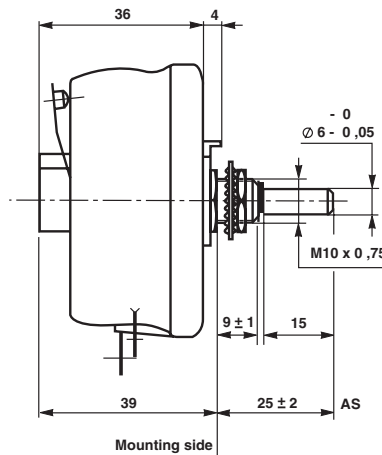
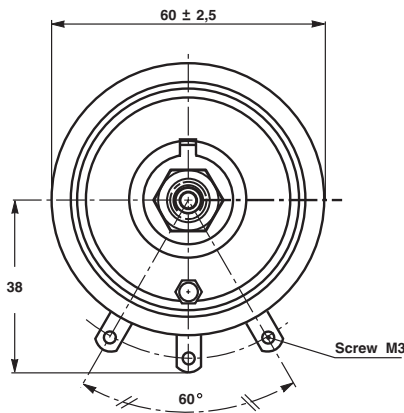
#### ADAPTATION BOARD



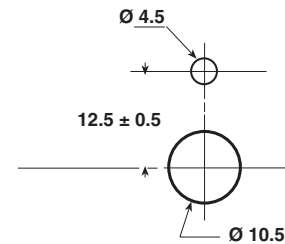
#### PANEL CUT OUT DETAILS



#### RT55-PA3



#### PANEL CUT OUT DETAILS



### MECHANICAL SPECIFICATIONS

Mechanical Protection	Vitreous
Mechanical Travel	300° ± 5°
Operating Torque	2 to 15 Ncm
End Stop Torque	100 Ncm
Unit Weight	175 g

### ENVIRONMENTAL SPECIFICATIONS

Temperature Range	- 55°C + 320°C
Climatic Category	CCTU 454 CEI 55/200/56

### ELECTRICAL SPECIFICATIONS

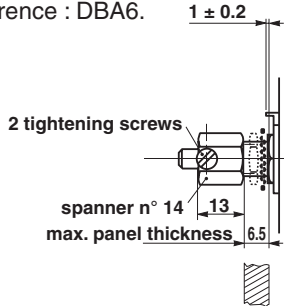
Ohmic Range	1Ω to 10kΩ	
Tolerance Standard	± 10%	
Power Rating	55 W at 25°C	
Variation Law	Standard	linear
	On request	sectorial winding
Limiting Element Voltage	500V (linear Law)	
Dielectric Strength	1000VRMS	
Insulation Resistance	10 <sup>9</sup> MΩ(500Vcc)	

**LOCKING DEVICE**

This is supplied as an option.

The available spindle length is according to the panel thickness.

Order reference : DBA6.



**ADAPTATION BOARD**

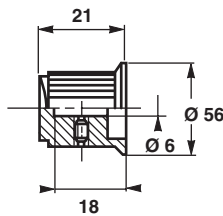
This enables 2 point mounting instead of bush mounting. The adaptation board is supplied as an option with 2 mounting screws.

SPINDLES			
Ø MM	DISTANCE TO MOUNTING PLATE MM	SCREW DRIVER SLOT	CODE
6	22	without	AD
		with	ADF
	25	without	AS
		with	ASF
	50	without	AL

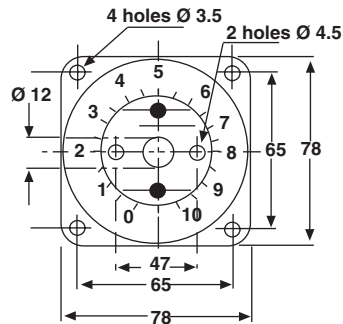
For any special requirement on request : spindle flats, etc. Please supply detailed drawing.

PARTICULAR CHARACTERISTICS		
NOMINAL RESISTANCE Ω	MAX. SERVICE VOLTAGE V	MAX. CURRENT THROUGH WIPER A
1	7.41	7.41
1.5	9.08	6.05
2.2	11	5
3.3	4.7	6.8
4.7	16.1	3.42
6.8	19.3	2.84
10	23.5	2.35
15	28.7	1.91
22	34.8	1.58
33	42.6	1.29
47	50.8	1.08
68	61.2	0.9
100	74.1	0.74
150	90.8	0.6
220	110	0.5
330	135	0.4
470	161	0.34
680	193	0.28
1k	235	0.23
1.5k	287	0.19
2.2k	348	0.16
3.3k	426	0.13
4.7k	500	0.11
5.6k	500	0.09
10k	500	0.05

**COMMAND KNOB 41JF (OPTION)**



**DIAL CG78 (OPTION)**



**MARKING**

SFERNICE trademark, series, style, ohmic value (in Ω or kΩ), tolerance (in %), maximum current in A, manufacturing date

ORDERING PROCEDURE									
VITREOUS	RT	55		L			AD	4.7kΩ	± 10%
	SERIES	STYLE	SPINDLE LOCKING DEVICE	VARIATION LAW	SPECIAL DESIGN	WINDING	SPINDLE (Code)	OHMIC VALUE	TOLERANCE
			Optional		Method N° Optional	Optional	for special spindles please supply detailed drawing		
	ACC	41JF	CG78	XXX					
OPTIONS	MODEL	KNOB	DIAL	OTHER SPECIAL REQUIREMENTS					



## Notice

Specifications of the products displayed herein are subject to change without notice. Vishay Intertechnology, Inc., or anyone on its behalf, assumes no responsibility or liability for any errors or inaccuracies.

Information contained herein is intended to provide a product description only. No license, express or implied, by estoppel or otherwise, to any intellectual property rights is granted by this document. Except as provided in Vishay's terms and conditions of sale for such products, Vishay assumes no liability whatsoever, and disclaims any express or implied warranty, relating to sale and/or use of Vishay products including liability or warranties relating to fitness for a particular purpose, merchantability, or infringement of any patent, copyright, or other intellectual property right.

The products shown herein are not designed for use in medical, life-saving, or life-sustaining applications. Customers using or selling these products for use in such applications do so at their own risk and agree to fully indemnify Vishay for any damages resulting from such improper use or sale.